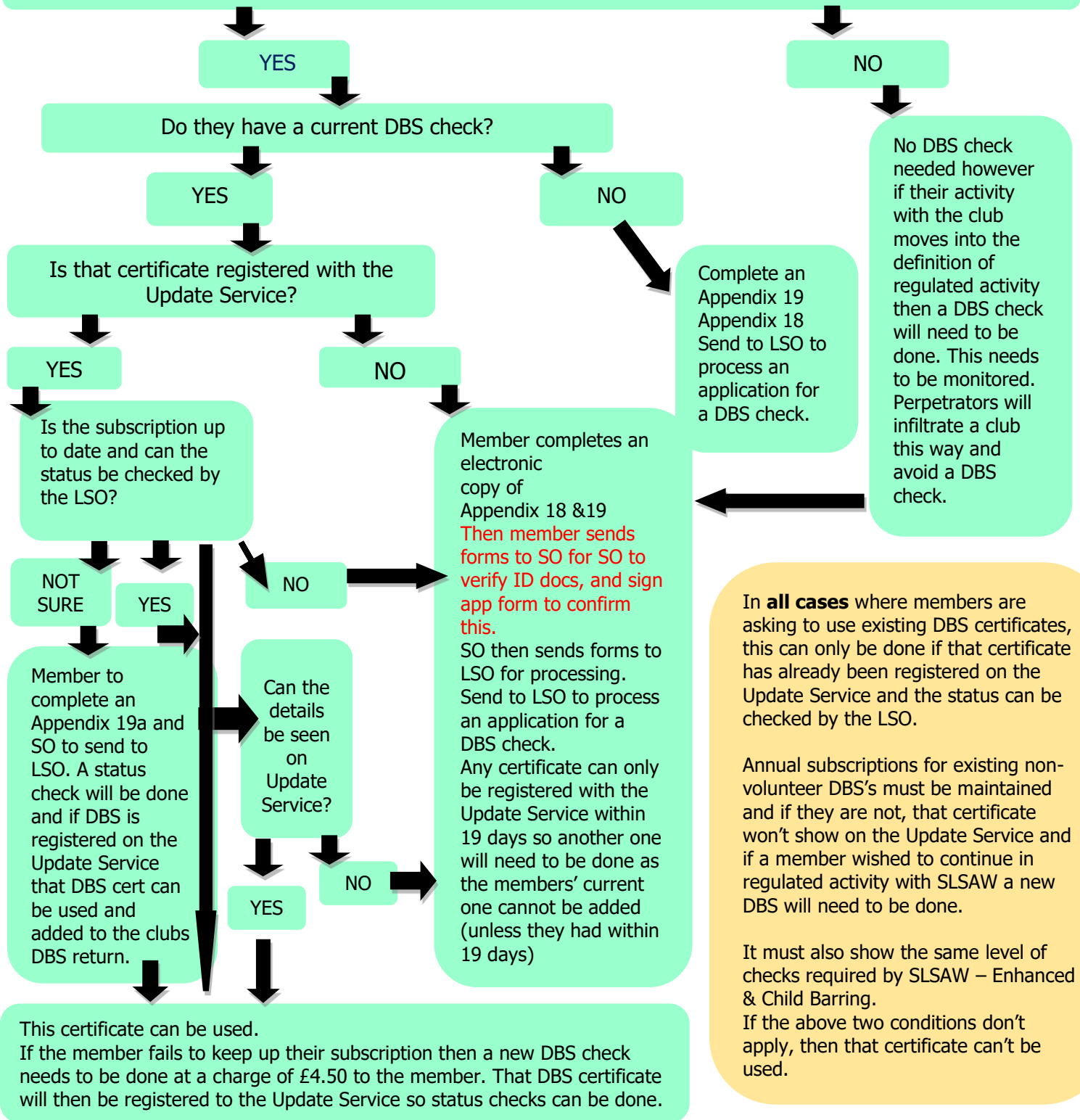


**Surf Life Saving Association of Wales – Appendix 26a**  
**DBS and Update Service Flowchart**

**Are they a current live member of the club? – No, only send form when they have membership**  
**Does this member work in regulated activity? – see below definition.**



When validating ID documents, it is best practice to carry the examination of ID documents out face-to-face or with a live video link as an alternative method so you can identify the face from the ID. The applicant must present the original versions of these documents when they first attend their volunteering role.

### **Regulated Activity definition**

<b>Typed of Activities</b> e.g. teaching, training, instructing, caring for, supervision, providing advice / guidance on well-being, or transport specifically for children (Excludes supervised individual)	<b>Regularly</b> ➤ once a week or more ➤ 4 or more occasions in a period of 30 days ➤ Overnight between 2 – 6am
<b>or</b>	
<b>In a limited number of specified places.</b> e.g. schools, children's homes and childcare premises (Excludes supervised volunteers)	<b>*Such day to day supervision as is reasonable in all the circumstances for the purpose of protecting any children concerned – sector specific guidance on supervision</b>
<b>and</b>	

### **Definitions of Regulated Activity contact with children**



**If you are unsure always ask.**  
**If the volunteer already has a DBS certificate, SO's must in all instances check that it contains advanced and child barring search.**

**SLSA Wales Child Safeguarding Policy 2023 - Version controlled V2 14/2/21**